

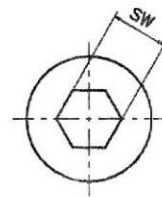
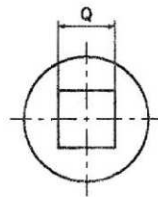
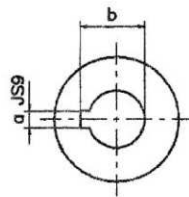
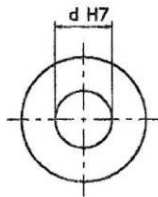
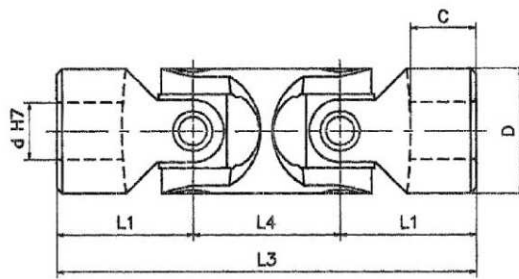


GIUNTI DOPPI ALTA VELOCITA' CON CUSCINETTI A RULLINI

HIGH SPEED DOUBLE JOINTS WITH NEEDLE ROLLER BEARINGS

serie «H»
series (DIN 808)

- Cuscinetti a rullini lubrificati a vita. Nessuna manutenzione
Roller bearings lubricated for life. No maintenance required.
- Precisi e versatili, silenziosi e scorrevoli;
Vasto campo di applicazione.
*Precise and versatile, silent and smooth running;
wide application field.*
- Angolo max 90°. Giri max. 4000/min.
Max angle 90°. Max speed 4000 R.P.M.
- "HD" corrispondenti DIN 808 - "HBD" corrispondenti DIN 808/7551
"HD" to DIN 808 - "HBD" to DIN 808/7551
- Esecuzioni speciali a richiesta.
Special executions on request.



Mod. Type	Codice / Code	d	D	L3	L1	L4	C	Codice / Code	Codice / Code	a	b	Codice / Code	Q	* SW	Peso Weight Kg
03HD	SHOD 1000	10	22	74	24	26	12	SHOD 101C	SHOD 102C	3	11,4	SHOD 102Q	10	10	0,15
04HD	SHOD 1200	12	25	86	28	30	13	SHOD 121C	SHOD 122C	4	13,8	SHOD 122Q	12	12	0,25
05HD	SHOD 1400	14	28	96	30	36	14	SHOD 141C	SHOD 142C	5	16,3	SHOD 142Q	14	14	0,40
1HD	SHOD 1600	16	32	104	34	36	16	SHOD 161C	SHOD 162C	5	18,3	SHOD 162Q	16	16	0,45
2HD	SHOD 1800	18	36	114	37	40	17	SHOD 181C	SHOD 182C	6	20,8	SHOD 182Q	18	18	0,70
3HD	SHOD 2000	20	42	128	41	46	18	SHOD 201C	SHOD 202C	6	22,8	SHOD 202Q	20	20	1,00
4HD	SHOD 2200	22	45	145	47,5	50	22	SHOD 221C	SHOD 222C	6	24,8	SHOD 222Q	22	22	1,55
5HD	SHOD 2500	25	50	163	54	55	26	SHOD 251C	SHOD 252C	8	28,3	SHOD 252Q	25	25	2,00
6HD	SHOD 3000	30	58	190	61	68	29	SHOD 301C	SHOD 302C	8	33,3	SHOD 302Q	30	30	2,90
6HD1	SHOD 3200	32	58	198	65	68	33	SHOD 321C	SHOD 322C	10	35,3	SHOD 322Q	30	30	3,00
7HD	SHOD 3500	35	70	212	70	72	35	SHOD 351C	SHOD 352C	10	38,3	—	**	**	4,75
8HD	SHOD 4000	40	80	245	80	85	39	SHOD 401C	SHOD 402C	12	43,3	—	**	**	7,20
9HD	SHOD 5000	50	95	290	95	100	46	SHOD 501C	SHOD 502C	14	53,8	—	**	**	12,00
04HBD	SHBD 1200	12	22	88	31	26	18	SHBD 121C	SHBD 122C	4	13,8	SHBD 102Q	10	10	0,20
1HBD	SHBD 1600	16	25	104	37	30	21	SHBD 161C	SHBD 162C	5	18,3	SHBD 122Q	12	12	0,30
3HBD	SHBD 2000	20	32	124	43	38	24	SHBD 201C	SHBD 202C	6	22,8	SHBD 162Q	16	16	0,50
5HBD	SHBD 2500	25	42	156	54	48	31	SHBD 251C	SHBD 252C	8	28,3	SHBD 202Q	20	20	1,20
6HBD	SHBD 3000	30	50	188	66	56	38	SHBD 301C	SHBD 302C	8	33,3	SHBD 252Q	25	25	1,70
8HBD	SHBD 4000	40	70	238	83	72	47	SHBD 401C	SHBD 402C	12	43,3	—	**	**	4,30