



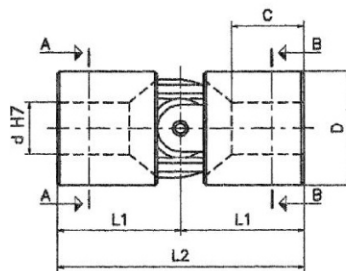
JEDNODUCHÝ KLOUBOVÝ SPOJ

série

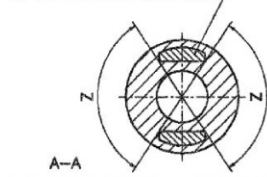
«S»

(DIN 808)

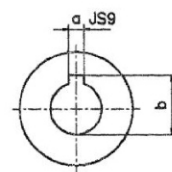
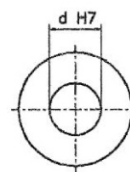
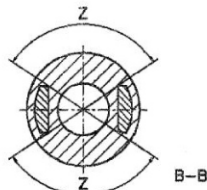
- Nucleo e forcelle integrali in acc. Cr. Ni. Cementato e temperato
HRC ≥ 60 , R ≥ 200 Kg/mm²
Central block and forks from one piece of Nickel Chrome steel cemented and hardened HRC ≥ 60 , R ≥ 200 Kg/sq.mm.
- Elevata resistenza usura, lunga durata.
High wear resistance, long life.
- Prelubrificati. Ingrassatore incorporato.
Pre-lubricated. Graser built-in.
- Angolo max: 45°. Giri max. 1000/min.
Max angle: 45°. Max speed 1000 R.P.M.
- Esecuzioni speciali a richiesta.
Special executions on request.



Acc. Cr.Ni. CMT / 60 HRC
60 HRC CEMENTED Cr.Ni. STEEL



Z=Zona di foratura - Z=boring area



Mod. Typ	Codi ce / C ode	d	D	L2	L1	C	Kód	Codi ce / C ode	a	b	Peso Weight Kg
01S	SSOS0600	6	16	34	17	9	—	—	—	—	0,05
02S	SSOS0800	8	18	40	20	11	—	—	—	—	0,06
03S	SSOS1000	10	22	48	24	14	SSOS101C	SSOS102C	3	11,4	0,11
04S	SSOS1200	12	26	56	28	16	SSOS121C	SSOS122C	4	13,8	0,17
05S	SSOS1400	14	29	60	30	17	SSOS141C	SSOS142C	5	16,3	0,22
1S	SSOS1600	16	32	68	34	20	SSOS161C	SSOS162C	5	18,3	0,32
2S	SSOS1800	18	37	74	37	21	SSOS181C	SSOS182C	6	20,8	0,47
3S	SSOS2000	20	42	82	41	23	SSOS201C	SSOS202C	6	22,8	0,67
4S	SSOS2200	22	47	95	47,5	25	SSOS221C	SSOS222C	6	24,8	1,00
5S	SSOS2500	25	52	108	54	29	SSOS251C	SSOS252C	8	28,3	1,35
6S	SSOS3000	30	58	122	61	34	SSOS301C	SSOS302C	8	33,3	1,85