



Approved Performance from Rexnord

Conveyor chains | American type

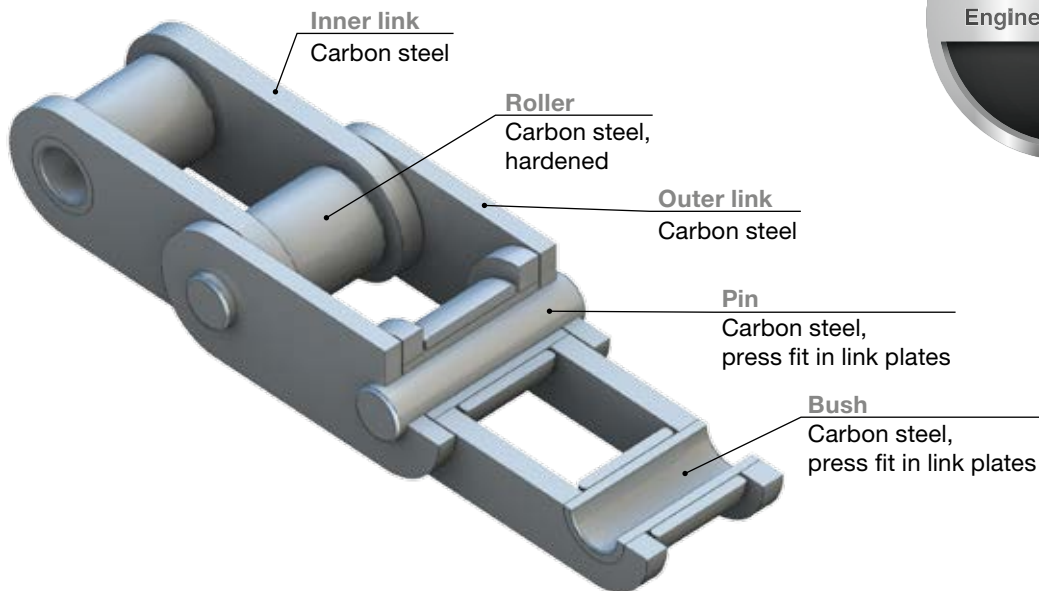


Engineered Chains



Conveyor chains - American type

Approved Performance from Rexnord.



APPLICATIONS

- Wood processing machinery, mining, automotive
- Conveyor belts

CHARACTERISTICS

- Flatted bushes/pins - anti-twist
- Seamless bushes
- Shot-peened outer and inner links
- Established brand name
- Fulfils ANSI quality requirements
- Rexnord guarantees delivery of the required performance

ADVANTAGES

- Good cost-benefit ratio
- Good availability
- Robust quality

LUBRICATION

- Contains no heavy metals
- Fulfils REACH requirements

Conveyor chains - American type

Approved Performance from Rexnord.



Proven performance

- Fulfils ISO quality requirements
- Rexnord guarantees the achievement of performance requirements
- Optimum choice for light and medium duty applications



Purchasing policy

- Suppliers must comply with local environmental laws
- Suppliers are obliged to comply with Rexnord's ethical policy and internal guidelines
- Suppliers must consider local environmental policy



Economical

- Good cost-benefit ratio
- Good availability

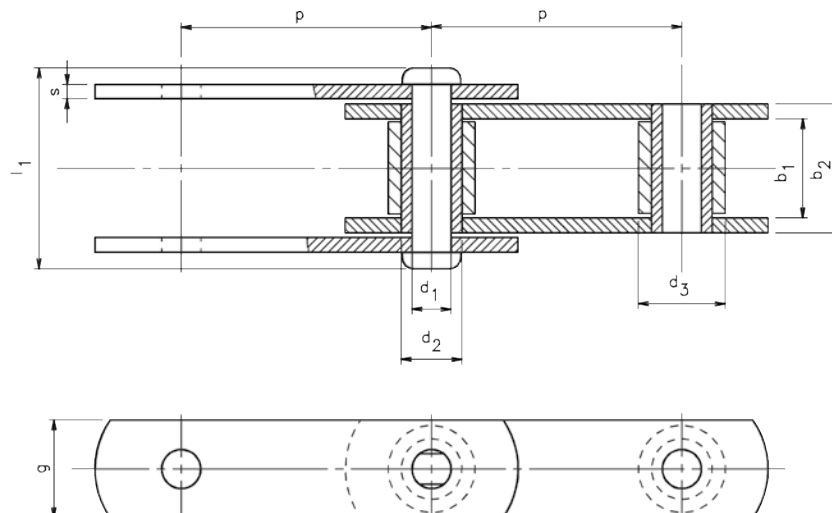


Conveyor chains - American type

Type	F _B (kN)	F _W (kN)	A	p	p	b ₁	b ₂	d ₁	d ₂	d ₃	l	g	s	q (kg/m)	Outer link	Pin	Roller	Bushes
	min	min	(cm ²)	(N/cm ²)	(mm)	min	max	max	max	max	max	g	s	(kg/m)				
RS 81X	71.2	8.9	3.9	2282	66.27	27.2	35.3	10.9	16.0	22.4	54.4	28.7	4.1	3.7	TH	CARB	TH	CARB
RS 81XH	124.6	11.1	4.7	2361	66.27	27.2	42.9	10.9	16.0	22.4	65.5	32.3	7.9	6.1	TH	TH	TH	CARB
RS 81XHH	*	*	*	*	66.27	27.2	42.9	10.9	16.0	22.4	70.1	32.3	7.9	6.9	TH	TH	TH	CARB
C 1288	71.2	8.9	3.7	2405	66.27	27.4	35.1	10.4	16.0	22.9	56.6	28.7	4.1	3.7	TH	CARB	CARB	CARB
81Xi	71.2	8.9	3.9	2282	66.27	27.2	35.3	10.9	16.0	22.4	54.4	28.7	4.1	3.7	TH	TH	CARB	CARB

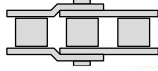
F_B: breaking strength; F_W: permitted weight

TH: tempered & hardened; CARB: hardened



Overview Rexnord roller chains

Roller Chains



REXNORD
RexPro
RexPro lubrication
improved wear resistance
high fatigue resistance

- Outstanding protection against corrosion and wear
- Unique protection against chain joint stiffness
- Extremely eco-friendly

REXNORD
RexAthletic
good loading capacity
extended lubrication intervals

- Durable and low-maintenance
- Longer servicing intervals
- High loading capacity

REXNORD
RexCarbon
no lubrication
low noise

- Maintenance-free
- Low noise
- Eco-friendly

REXNORD
RexPlus
excellent corrosion resistance
high reliability

- Excellent resistance to rust and acids
- Highly reliable
- Fulfills hygiene requirements
- NSF H1 certification

REXNORD
RexPlusCarbon
no lubrication
excellent corrosion resistance

- Combination of RexPlus and RexCarbon
- Excellent resistance to rust and acids
- Maintenance-free
- NSF H1 certification

REXNORD
RexHiPro
good corrosion resistance
excellent loading capacity

- Outstanding corrosion resistance
- Long service life
- High loading capacity

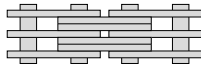
Link-Belt
a brand of
REXNORD

- The optimum choice for light and medium duty
- Good cost-benefit ratio
- High availability

REXNORD
RexProX
RexPro lubrication
improved wear resistance
high fatigue resistance

- Extremely high loading capacity
- Long service life
- Outstanding protection against corrosion and wear

Leaf Chains



REXNORD
RexPro
RexPro lubrication
improved wear resistance
high fatigue resistance

- Outstanding protection against corrosion and wear
- Unique protection against chain joint stiffness
- Extremely eco-friendly

REXNORD
RexHiPro
good corrosion resistance
excellent loading capacity

- Outstanding corrosion resistance
- Long service life
- High loading capacity

REXNORD
RexAthletic
good loading capacity
extended lubrication intervals

- Durable and low-maintenance
- Longer servicing intervals
- High loading capacity

REXDL
a brand of
REXNORD

- The optimum choice for light and medium duty
- Good cost-benefit ratio
- Good availability



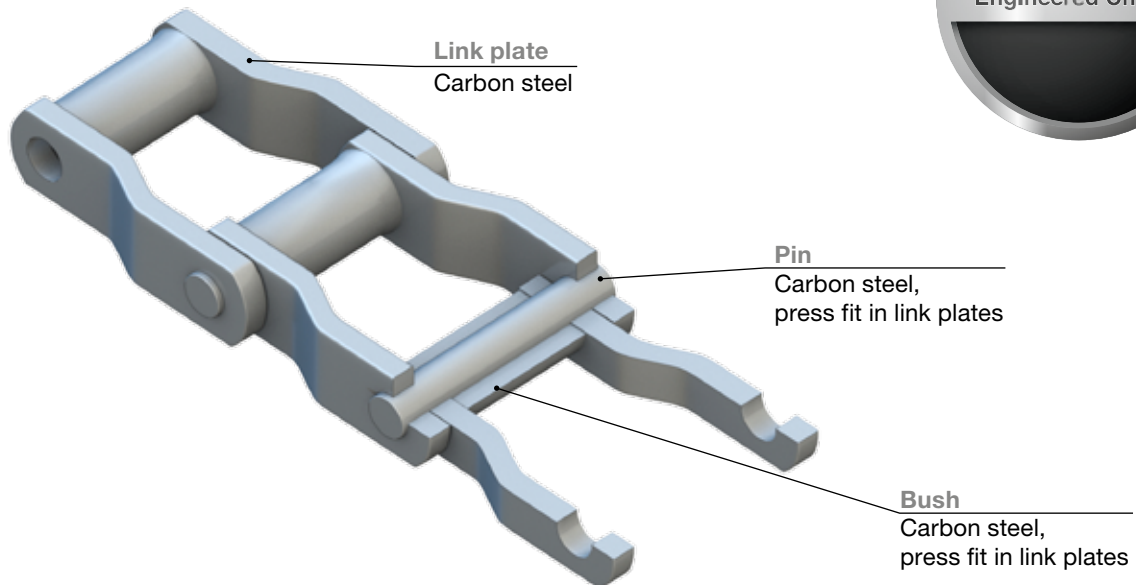
Approved Performance from Rexnord

Conveyor chains | W-Series



Conveyor chains - W-Series

Approved Performance from Rexnord.



APPLICATIONS

- Wood processing machinery, mining, automotive
- Conveyor belts

CHARACTERISTICS

- Welded bushes
- Selective induction hardening of pins
- Established brand name
- Fulfils ANSI quality requirements
- Rexnord guarantees delivery of the required performance

ADVANTAGES

- Long service lifespan
- Robust chain
- Rugged quality

LUBRICATION

- Contains no heavy metals
- Fulfils REACH requirements

Conveyor chains – WH-Series

Approved Performance from Rexnord.



Proven performance

- Fulfils ISO quality requirements
- Rexnord guarantees the achievement of performance requirements
- Optimum choice for light and medium duty applications



Purchasing policy

- Suppliers must comply with local environmental laws
- Suppliers are obliged to comply with Rexnord's ethical policy and internal guidelines
- Suppliers must consider local environmental policy



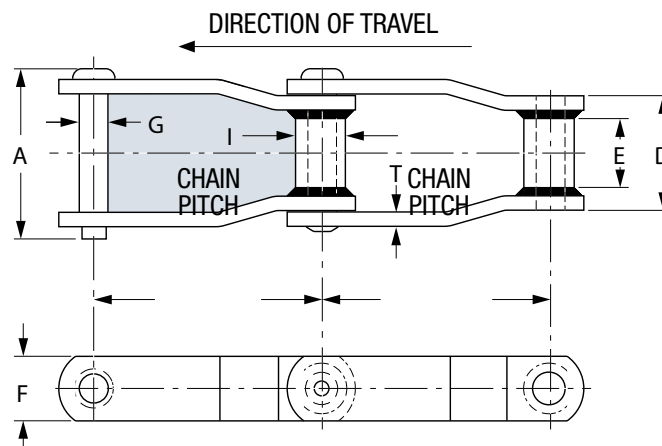
Economical

- Good cost-benefit ratio
- Good availability



Conveyor chains – WH-Series

Chain no.	Average Pitch	Minimum Ultimate Strength	Rated Working Load	Sidebars				Pin	Barrel		Average Weight
				A	E	T	F		D	I	
	mm	kN	kN	mm	mm	mm	mm	mm	mm	per m	
WH 78	66.27	113.000	15.600	75.69	28.45	6.35	28.70	12.70	50.80	22.35	5.95
WH 82	78.11	131.000	19.600	82.55	31.75	6.35	31.75	14.22	57.15	30.99	8.93
WHX 124	101.60	224.000	32.700	105.41	41.40	9.65	38.10	19.05	71.37	36.58	13.39
WHX 124 HD	103.20	356.000	40.700	122.43	41.40	12.70	50.80	22.35	76.20	41.40	20.84
WHX 111	120.90	224.000	39.300	121.67	57.15	9.65	38.10	19.05	85.85	36.58	11.91
WHX 106	152.40	224.000	32.700	106.17	41.40	9.65	38.10	19.05	71.37	36.58	10.42
WHX 132	153.67	378.000	66.700	160.27	76.20	12.70	50.80	25.40	111.25	44.45	20.84
WHX 150	153.67	400.000	66.700	160.27	76.20	12.70	63.50	25.40	111.25	44.45	23.81
WHX 155	153.67	453.000	77.800	164.59	69.85	14.22	63.50	28.70	111.25	44.45	28.28
WHX 157	153.67	520.000	80.900	164.59	69.85	16.00	63.50	28.70	117.60	44.45	29.77



Conveyor chains – WDH-Series

Approved Performance from Rexnord.



Proven performance

- Fulfils ISO quality requirements
- Rexnord guarantees the achievement of performance requirements
- Optimum choice for light and medium duty applications



Purchasing policy

- Suppliers must comply with local environmental laws
- Suppliers are obliged to comply with Rexnord's ethical policy and internal guidelines
- Suppliers must consider local environmental policy

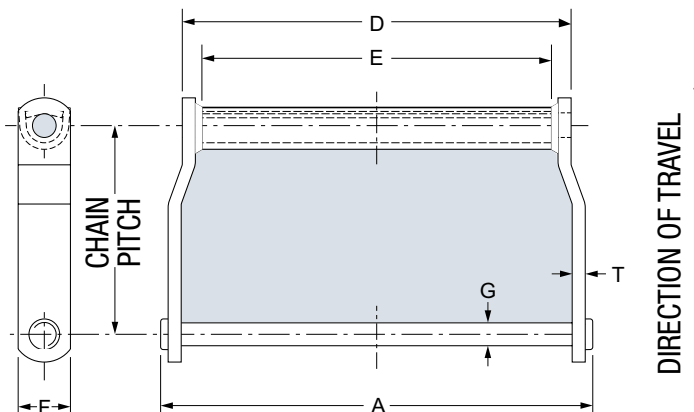


Economical

- Good cost-benefit ratio
- Good availability

Conveyor chains - WDH-Series

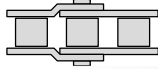
Chain no.	Average Pitch	Minimum Ultimate Strength	Rated Working Load	Sidebars				Pin	Barrel	Average Weight
	mm	kN	kN	A mm	E mm	T mm	F mm	G mm	D mm	per m
WDH 104	152.40	244.000	44.500	171.45	104.90	9.65	38.10	19.05	136.65	13.39
WDH 110	152.40	244.000	44.500	299.72	228.60	9.65	38.10	19.05	263.65	17.86
WDH 120	152.40	351.000	66.700	307.34	222.25	12.70	50.80	22.35	260.35	29.77
WDH 112	203.20	244.000	44.500	299.72	228.60	9.65	38.10	19.05	263.65	14.88
WDH 113	152.40	253.000	52.000	317.50	228.60	12.70	38.10	22.35	270.00	26.79
WDH 480	203.20	351.000	66.700	370.84	284.48	12.70	50.80	22.35	323.85	26.79
WDH 580	203.20	480.000	91.100	377.44	284.48	12.70	50.80	25.40	323.85	26.79
WDH 2210	155.85	244.000	44.500	302.26	228.60	9.65	38.10	19.05	263.65	17.11
WDH 2380	207.29	351.000	66.700	370.84	285.75	12.70	50.80	22.35	323.85	26.79





Overview Rexnord roller chains

Roller Chains



REXNORD

RexPro
RexPro lubrication
improved wear resistance
high fatigue resistance

- Outstanding protection against corrosion and wear
- Unique protection against chain joint stiffness
- Extremely eco-friendly

REXNORD

RexAthletic
good loading capacity
extended lubrication intervals

- Durable and low-maintenance
- Longer servicing intervals
- High loading capacity

REXNORD

RexCarbon
no lubrication
low noise

- Maintenance-free
- Low noise
- Eco-friendly

REXNORD

RexPlus
excellent corrosion resistance
high reliability

- Excellent resistance to rust and acids
- Highly reliable
- Fulfills hygiene requirements
- NSF H1 certification

REXNORD

RexPlusCarbon
no lubrication
excellent corrosion resistance

- Combination of RexPlus and RexCarbon
- Excellent resistance to rust and acids
- Maintenance-free
- NSF H1 certification

REXNORD

RexHiPro
good corrosion resistance
excellent loading capacity

- Outstanding corrosion resistance
- Long service life
- High loading capacity

Link-Belt®
a brand of REXNORD

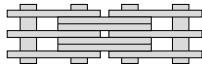
- The optimum choice for light and medium duty
- Good cost-benefit ratio
- High availability

REXNORD

RexProX
RexPro lubrication
improved wear resistance
high fatigue resistance

- Extremely high loading capacity
- Long service life
- Outstanding protection against corrosion and wear

Leaf Chains



REXNORD

RexPro
RexPro lubrication
improved wear resistance
high fatigue resistance

- Outstanding protection against corrosion and wear
- Unique protection against chain joint stiffness
- Extremely eco-friendly

REXNORD

RexHiPro
good corrosion resistance
excellent loading capacity

- Outstanding corrosion resistance
- Long service life
- High loading capacity

REXNORD

RexAthletic
good loading capacity
extended lubrication intervals

- Durable and low-maintenance
- Longer servicing intervals
- High loading capacity

REXDL®
a brand of REXNORD

- The optimum choice for light and medium duty
- Good cost-benefit ratio
- Good availability