



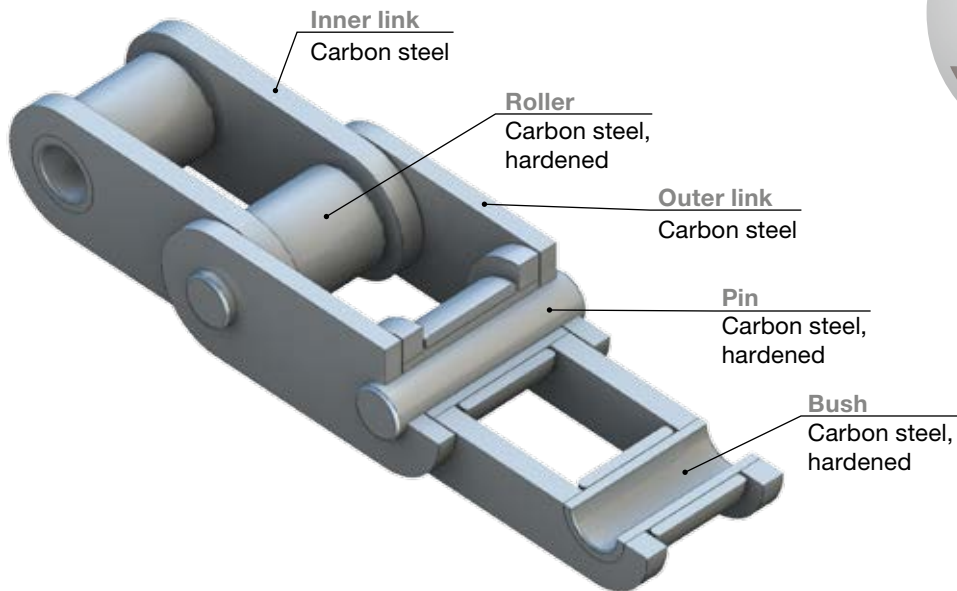
Approved Performance from Rexnord

**Conveyor chains FV and FVT DIN 8165**



## Conveyor chains FV and FVT DIN 8165

Approved Performance from Rexnord.



### APPLICATIONS

- Wood processing machinery, mining, automotive
- Conveyor belts

### CHARACTERISTICS

- Flatted bushes / pins - anti-twist
- Seamless bushes
- Shot-peened outer and inner links
- Established brand name
- Fulfils ISO quality requirements
- Rexnord guarantees delivery of the required performance

### ADVANTAGES

- Good cost-benefit ratio
- Good availability
- Robust quality

### LUBRICATION

- Contains no heavy metals
- Fulfils REACH requirements

## FV with solid pin DIN 8165 - Type B without rollers

Approved Performance from Rexnord.



### Proven performance

- Fulfils ISO quality requirements
- Rexnord guarantees the achievement of performance requirements
- Optimum choice for light and medium duty applications



### Purchasing policy

- Suppliers must comply with local environmental laws
- Suppliers are obliged to comply with Rexnord's ethical policy and internal guidelines
- Suppliers must consider local environmental policy



### Economical

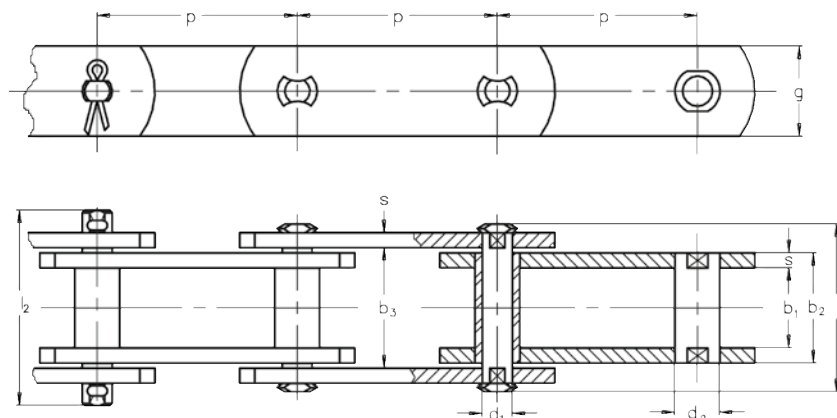
- Good cost-benefit ratio
- Good availability



## FV with solid pin DIN 8165 - Type B without rollers

DIN	F <sub>B</sub> (kN)	F <sub>W</sub> (kN)	A (cm <sup>2</sup> )	p												b <sub>1</sub> min	b <sub>2</sub> max	b <sub>3</sub> min	d <sub>1</sub> max	d <sub>2</sub> max	x	l <sub>1</sub> max	l <sub>2</sub> max	g max	s
				p																					
FV 40	40	6.7	2.45	2680	40	50	63	80	100	125	160	-	18	24.5	25.0	10	15	12.5	37	44	26	3			
FV 63	63	10.5	3.66	2840	50	63	80	100*	125*	160	200	-	22	30.5	31.0	12	18	15.5	46	55	30	4			
FV 90	90	15	4.97	3000	50	63	80	100*	125*	160	200	250	25	35.5	36.0	14	20	18.5	53	62	35	5			
FV 112	112	18.7	6.8	2750	80	100*	125*	160*	200	250	315	-	30	42.5	43.0	16	22	22.0	63	72	40	6			
FV 140	140	23.4	8.55	2720	80	100*	125*	160*	200	250	315	400	35	47.5	48.0	18	26	26.0	68	80	45	6			
FV 180	180	30	12.3	2440	-	100*	125*	160*	200	250	315	400	45	61.5	62.5	20	30	35.0	86	100	50	8			
FV 250	250	41.7	18.7	2230	-	-	125	160	200	250	315	400	55	72.0	73.0	26	36	42.0	98	114	60	8			
FV 315	315	52.5	25.8	2040	-	-	125	160	200	250	315	400	65	86.0	87.0	30	42	50.0	117	133	70	10			
FV 400	400	66.7	30.7	2170	-	-	-	160	200	250	315	400	70	96.0	97.0	32	44	54.0	131	151	70	12			

F<sub>B</sub>: breaking strength; F<sub>W</sub>: permitted weight



## FV with solid pin DIN 8165 - Type S with small rollers

Approved Performance from Rexnord.



### Proven performance

- Fulfils ISO quality requirements
- Rexnord guarantees the achievement of performance requirements
- Optimum choice for light and medium duty applications



### Purchasing policy

- Suppliers must comply with local environmental laws
- Suppliers are obliged to comply with Rexnord's ethical policy and internal guidelines
- Suppliers must consider local environmental policy



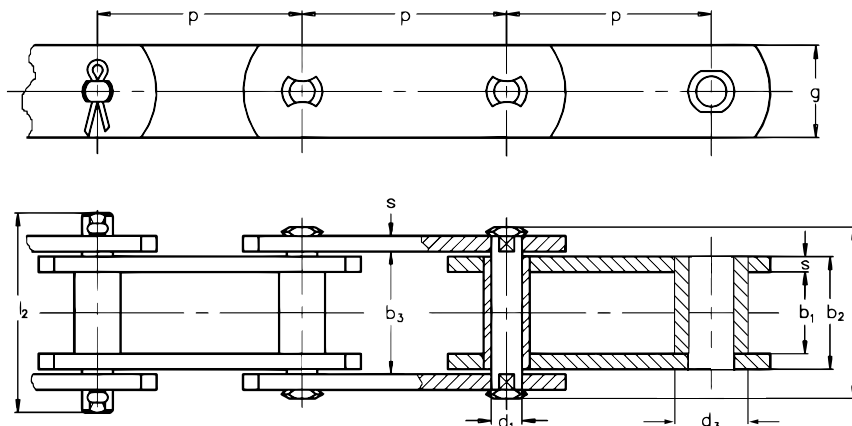
### Economical

- Good cost-benefit ratio
- Good availability

## FV with solid pin DIN 8165 - Type S with small rollers

DIN	FB (kN)	Fw (kN)	A	p	p								b1	b2	b3	d1	d3	x	l1	l2	g	s
	min	min	(cm <sup>2</sup> )	(N/cm <sup>2</sup> )									min	max	min	max	max		max	max	max	
FV 40	40	6.7	2.45	2680	40	50	63	80	100	125	160	-	18	24.5	25.0	10	20	12.5	37	44	26	3
FV 63	63	10.5	3.66	2840	50	63	80	100*	125*	160	200	-	22	30.5	31.0	12	26	15.5	46	55	30	4
FV 90	90	15	4.97	3000	50	63	80	100*	125*	160	200	250	25	35.5	36.0	14	30	18.5	53	62	35	5
FV 112	112	18.7	6.8	2750	80	100*	125*	160*	200	250	315	-	30	42.5	43.0	16	32	22.0	63	72	40	6
FV 140	140	23.4	8.55	2720	80	100*	125*	160*	200	250	315	400	35	47.5	48.0	18	36	26.0	68	80	45	6
FV 180	180	30	12.3	2440	-	100*	125*	160*	200	250	315	400	45	61.5	62.5	20	42	35.0	86	100	50	8
FV 250	250	41.7	18.7	2230	-	-	125	160	200	250	315	400	55	72.0	73.0	26	50	42.0	98	114	60	8
FV 315	315	52.5	25.8	2040	-	-	125	160	200	250	315	400	65	86.0	87.0	30	60	50.0	117	133	70	10
FV 400	400	66.7	30.7	2170	-	-	-	160	200	250	315	400	70	96.0	97.0	32	60	54.0	131	151	70	12

F<sub>B</sub>: breaking strength; F<sub>w</sub>: permitted weight



## FV with solid pin DIN 8165 - Type P with idler rollers

Approved Performance from Rexnord.



### Proven performance

- Fulfils ISO quality requirements
- Rexnord guarantees the achievement of performance requirements
- Optimum choice for light and medium duty applications



### Purchasing policy

- Suppliers must comply with local environmental laws
- Suppliers are obliged to comply with Rexnord's ethical policy and internal guidelines
- Suppliers must consider local environmental policy



### Economical

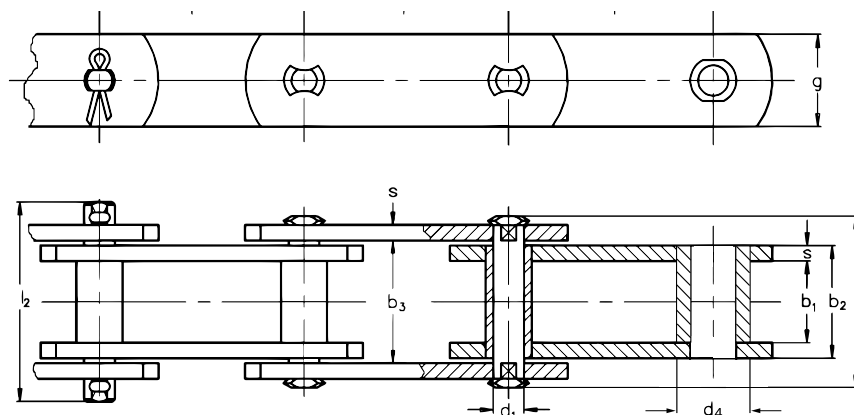
- Good cost-benefit ratio
- Good availability



## FV with solid pin DIN 8165 - Type P with idler rollers

DIN	F <sub>B</sub> (kN)	F <sub>W</sub> (kN)	A (cm <sup>2</sup> )	p (N/cm <sup>2</sup> )	p												b <sub>1</sub> min	b <sub>2</sub> max	b <sub>3</sub> min	d <sub>1</sub> max	d <sub>4</sub> max	x	l <sub>1</sub> max	l <sub>2</sub> max	g max	s
					40	50	63	80	100	125	160	200	250	315	400	450										
FV 40	40	6.7	2.45	2680	40	50	63	80	100	125	160	-	18	24.5	25.0	10	32	12.5	37	44	26	3				
FV 63	63	10.5	3.66	2840	50	63	80	100*	125*	160	200	-	22	30.5	31.0	12	40	15.5	46	55	30	4				
FV 90	90	15	4.97	3000	50	63	80	100*	125*	160	200	250	25	35.5	36.0	14	48	18.5	53	62	35	5				
FV 112	112	18.7	6.8	2750	80	100*	125*	160*	200	250	315	-	30	42.5	43.0	16	55	22.0	63	72	40	6				
FV 140	140	23.4	8.55	2720	80	100*	125*	160*	200	250	315	400	35	47.5	48.0	18	60	26.0	68	80	45	6				
FV 180	180	30	12.3	2440	-	100*	125*	160*	200	250	315	400	45	61.5	62.5	20	70	35.0	86	100	50	8				
FV 250	250	41.7	18.7	2230	-	-	125	160	200	250	315	400	55	72.0	73.0	26	80	42.0	98	114	60	8				
FV 315	315	52.5	25.8	2040	-	-	125	160	200	250	315	400	65	86.0	87.0	30	90	50.0	117	133	70	10				
FV 400	400	66.7	30.7	2170	-	-	-	160	200	250	315	400	70	96.0	97.0	32	100	54.0	131	151	70	12				

F<sub>B</sub>: breaking strength; F<sub>W</sub>: permitted weight



## FV with solid pin DIN 8165 - Type F with flanged idler rollers

Approved Performance from Rexnord.



### Proven performance

- Fulfils ISO quality requirements
- Rexnord guarantees the achievement of performance requirements
- Optimum choice for light and medium duty applications



### Purchasing policy

- Suppliers must comply with local environmental laws
- Suppliers are obliged to comply with Rexnord's ethical policy and internal guidelines
- Suppliers must consider local environmental policy



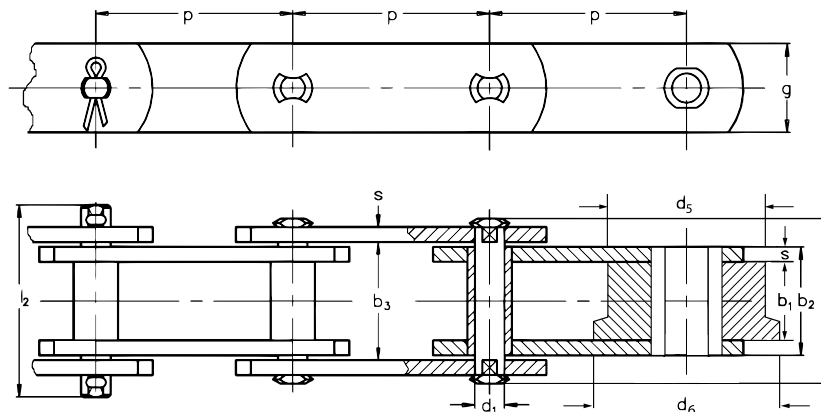
### Economical

- Good cost-benefit ratio
- Good availability

## FV with solid pin DIN 8165 - Type F with flanged idler rollers

DIN	F <sub>B</sub> (kN)	F <sub>W</sub> (kN)	A	p	p												b <sub>1</sub>	b <sub>2</sub>	b <sub>3</sub>	d <sub>1</sub>	d <sub>5</sub>	d <sub>6</sub>	x	l <sub>1</sub>	l <sub>2</sub>	g	s										
	min	min	(cm <sup>2</sup> )	(N/cm <sup>2</sup> )	min	max	min	max	min	max	min	max	min	max	min	max	min	max	min	max	min	max	min	max	min	max	min	max	min	max	min	max	min	max			
FV 40	40	6.7	2.45	2680	40	50	63	80	100	125	160	-	18	24.5	25.0	10	40	48	12.5	37	44	26	3														
FV 63	63	10.5	3.66	2840	50	63	80	100*	125*	160	200	-	22	30.5	31.0	12	50	60	15.5	46	55	30	4														
FV 90	90	15	4.97	3000	50	63	80	100*	125*	160	200	250	25	35.5	36.0	14	63	73	18.5	53	62	35	5														
FV 112	112	18.7	6.8	2750	80	100*	125*	160*	200	250	315	-	30	42.5	43.0	16	72	87	22.0	63	72	40	6														
FV 140	140	23.4	8.55	2720	80	100*	125*	160*	200	250	315	400	35	47.5	48.0	18	80	95	26.0	68	80	45	6														
FV 180	180	30	12.3	2440	-	100*	125*	160*	200	250	315	400	45	61.5	62.5	20	100	120	35.0	86	100	50	8														
FV 250	250	41.7	18.7	2230	-	-	125	160	200	250	315	400	55	72.0	73.0	26	125	145	42.0	98	114	60	8														
FV 315	315	52.5	25.8	2040	-	-	125	160	200	250	315	400	65	86.0	87.0	30	140	170	50.0	117	133	70	10														
FV 400	400	66.7	30.7	2170	-	-	-	160	200	250	315	400	70	96.0	97.0	32	150	185	54.0	131	151	70	12														

F<sub>B</sub>: breaking strength; F<sub>W</sub>: permitted weight



## FVT with solid pin DIN 8165

Approved Performance from Rexnord.



### Proven performance

- Fulfils ISO quality requirements
- Rexnord guarantees the achievement of performance requirements
- Optimum choice for light and medium duty applications



### Purchasing policy

- Suppliers must comply with local environmental laws
- Suppliers are obliged to comply with Rexnord's ethical policy and internal guidelines
- Suppliers must consider local environmental policy



### Economical

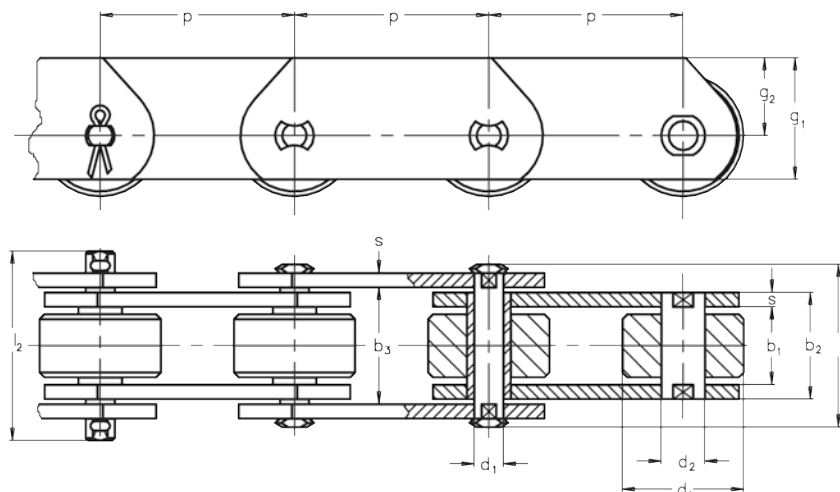
- Good cost-benefit ratio
- Good availability



## FVT with solid pin DIN 8165

DIN	F <sub>B</sub> (kN)	F <sub>W</sub> (kN)	A (cm <sup>2</sup> )	p (N/cm <sup>2</sup> )	p										b <sub>1</sub> min	b <sub>2</sub> max	b <sub>3</sub> min	d <sub>1</sub> max	d <sub>2</sub>	d <sub>4</sub>	g <sub>1</sub>	g <sub>2</sub>	s	l <sub>1</sub> max	l <sub>2</sub> max
	min	min			40	50	63	80	100	125	160	200	250	315											
FVT 40	40	6.7	2.45	2680	40	50	63	80	100	125	160	-	18	24.5	25.0	10	15	35	22.0	3	37	44	44		
FVT 63	63	10.5	3.66	2840	50	63	80	100	125	160	200	-	22	30.5	31.0	12	18	40	25.0	4	46	55	55		
FFVT 90	90	15	4.97	3000	50	63	80	100	125	160	200	250	25	35.5	36.0	14	20	45	27.5	5	53	62	62		
FVT 112	112	18.7	6.8	2750	80	100	125	160	200	250	315	-	30	42.5	43.0	16	22	50	30.0	6	63	72	72		
FVT 140	140	23.4	8.55	2720	80	100	125	160	200	250	315	400	35	47.5	48.0	18	26	60	37.5	6	68	80	80		
FVT 180	180	30	12.3	2440	-	100	125	160	200	250	315	400	45	61.5	62.5	20	30	70	45.0	8	86	100	100		
FVT 250	250	41.7	18.7	2230	-	-	125	160	200	250	315	400	55	72.0	73.0	26	36	80	50.0	8	98	114	114		
FVT 315	315	52.5	25.8	2040	-	-	125	160	200	250	315	400	65	86.0	87.0	30	42	90	55.0	10	117	133	133		
FVT 400	400	66.7	30.7	2170	-	-	-	160	200	250	315	400	70	96.0	97.0	32	44	90	55.0	12	131	151	151		

F<sub>B</sub>: breaking strength; F<sub>W</sub>: permitted weight



## FV with K attachments

Approved Performance from Rexnord.



### Proven performance

- Fulfils ISO quality requirements
- Rexnord guarantees the achievement of performance requirements
- Optimum choice for light and medium duty applications



### Purchasing policy

- Suppliers must comply with local environmental laws
- Suppliers are obliged to comply with Rexnord's ethical policy and internal guidelines
- Suppliers must consider local environmental policy

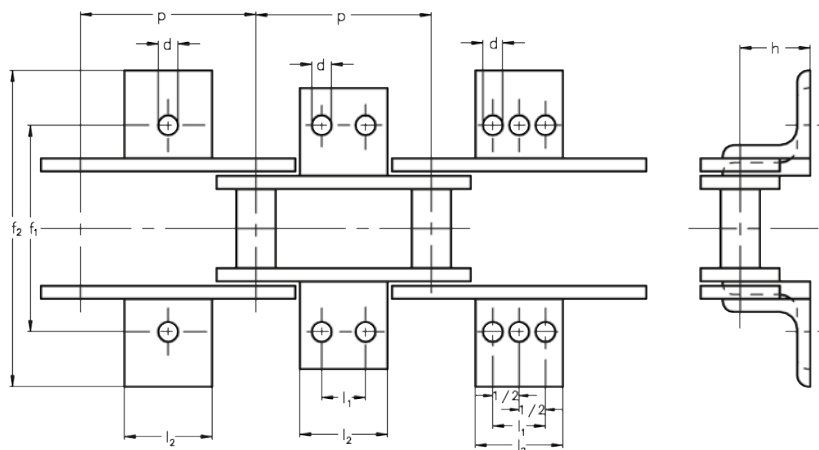


### Economical

- Good cost-benefit ratio
- Good availability

## FV with K attachments

DIN		p								d	f <sub>1</sub>	f <sub>2</sub>	h	Attachment
		63	100	125	160	200	250	315	400			max		
FV 40	I1	-	30	-	-	-	-	-	-	6.6	50	100	20	25 x 25 x 3
	I2	31	50	-	-	-	-	-	-					
FV 63	I1	-	30	40	50	-	-	-	-	9.0	68	110	30	30 x 30 x 3
	I2	40	50	60	70	-	-	-	-					
FV 90	I1	-	30	40	50	60	65	-	-	9.0	80	130	35	40 x 40 x 4
	I2	-	50	60	70	80	85	-	-					
FV 112	I1	-	30	40	50	65	80	-	-	11.0	100	140	40	40 x 40 x 5
	I2	-	50	65	75	90	105	-	-					
FV 140	I1	-	30	40	50	65	80	100	-	11.0	100	170	45	50 x 50 x 5
	I2	-	55	65	75	90	105	125	-					
FV 180	I1	-	30	40	50	65	80	100	-	13.5	128	190	45	50 x 50 x 6
	I2	-	-	65	80	95	110	130	130					
FV 250	I1	-	-	-	50	65	80	100	100	13.5	138	230	55	65 x 65 x 8
	I2	-	-	50	80	95	110	130	130					
FV 315	I1	-	-	-	-	65	80	100	100	13.5	170	260	60	70 x 70 x 8
	I2	-	-	-	50	95	110	130	130					
FV 400	I1	-	-	-	-	60	80	100	100	17.5	190	290	65	80 x 80 x 10
	I2	-	-	-	50	100	120	140	140					





## FV with front brackets

Approved Performance from Rexnord.



### Proven performance

- Fulfils ISO quality requirements
- Rexnord guarantees the achievement of performance requirements
- Optimum choice for light and medium duty applications



### Purchasing policy

- Suppliers must comply with local environmental laws
- Suppliers are obliged to comply with Rexnord's ethical policy and internal guidelines
- Suppliers must consider local environmental policy



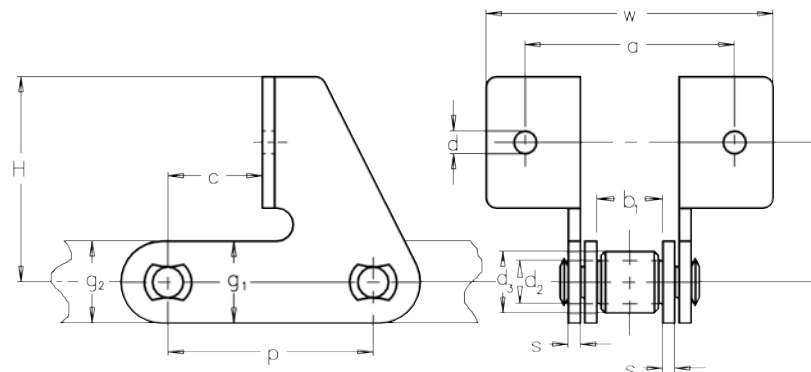
### Economical

- Good cost-benefit ratio
- Good availability



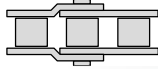
## FV with front brackets

DIN ISO	p	b1	d2	d3	a	w	h	H	c	d	s	g1	g2
FV 90	100	26.5	20	-	94.5	132.5	68	100	45	11.0	6	40	40
FV 90	100	26.5	20	-	90	132.5	78	100	45	11.0	6	40	40
FV 90	100	25	20	-	90	130.5	78	100	45	11.0	6	40	40



## Overview Rexnord roller chains

### Roller Chains



**REXNORD**  
RexPro  
RexPro lubrication  
improved wear resistance  
high fatigue resistance

- Outstanding protection against corrosion and wear
- Unique protection against chain joint stiffness
- Extremely eco-friendly

**REXNORD**  
RexAthletic  
good loading capacity  
extended lubrication intervals

- Durable and low-maintenance
- Longer servicing intervals
- High loading capacity

**REXNORD**  
RexCarbon  
no lubrication  
low noise

- Maintenance-free
- Low noise
- Eco-friendly

**REXNORD**  
RexPlus  
excellent corrosion resistance  
high reliability

- Excellent resistance to rust and acids
- Highly reliable
- Fulfills hygiene requirements
- NSF H1 certification

**REXNORD**  
RexPlusCarbon  
no lubrication  
excellent corrosion resistance

- Combination of RexPlus and RexCarbon
- Excellent resistance to rust and acids
- Maintenance-free
- NSF H1 certification

**REXNORD**  
RexHiPro  
good corrosion resistance  
excellent loading capacity

- Outstanding corrosion resistance
- Long service life
- High loading capacity

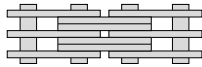
**Link-Belt**  
a brand of  
REXNORD

- The optimum choice for light and medium duty
- Good cost-benefit ratio
- High availability

**REXNORD**  
RexProX  
RexPro lubrication  
improved wear resistance  
high fatigue resistance

- Extremely high loading capacity
- Long service life
- Outstanding protection against corrosion and wear

### Leaf Chains



**REXNORD**  
RexPro  
RexPro lubrication  
improved wear resistance  
high fatigue resistance

- Outstanding protection against corrosion and wear
- Unique protection against chain joint stiffness
- Extremely eco-friendly

**REXNORD**  
RexHiPro  
good corrosion resistance  
excellent loading capacity

- Outstanding corrosion resistance
- Long service life
- High loading capacity

**REXNORD**  
RexAthletic  
good loading capacity  
extended lubrication intervals

- Durable and low-maintenance
- Longer servicing intervals
- High loading capacity

**REXDL**  
a brand of  
REXNORD

- The optimum choice for light and medium duty
- Good cost-benefit ratio
- Good availability