

# OZUBENÉ ŘEMENY "MECTROL" METRICKÉ "T"

## T 2.5 (2.5mm rozteč)

| Typ řemenu | Počet zubů | Výpočtová délka |
|------------|------------|-----------------|
| T2.5-120   | 48         | 120.0           |
| T2.5-145   | 58         | 145.0           |
| T2.5-160   | 64         | 160.0           |
| T2.5-177   | 71         | 177.5           |
| T2.5-200   | 80         | 200.0           |
| T2.5-230   | 92         | 230.0           |
| T2.5-245   | 98         | 245.0           |
| T2.5-265   | 106        | 265.0           |
| T2.5-285   | 114        | 285.0           |
| T2.5-305   | 122        | 305.0           |
| T2.5-317   | 127        | 317.5           |
| T2.5-330   | 132        | 330.0           |
| T2.5-380   | 152        | 380.0           |
| T2.5-420   | 168        | 420.0           |
| T2.5-480   | 192        | 480.0           |
| T2.5-500   | 200        | 500.0           |
| T2.5-600   | 240        | 600.0           |
| T2.5-620   | 248        | 620.0           |
| T2.5-650   | 260        | 650.0           |
| T2.5-780   | 312        | 780.0           |
| T2.5-915   | 366        | 915.0           |
| T2.5-950   | 380        | 950.0           |

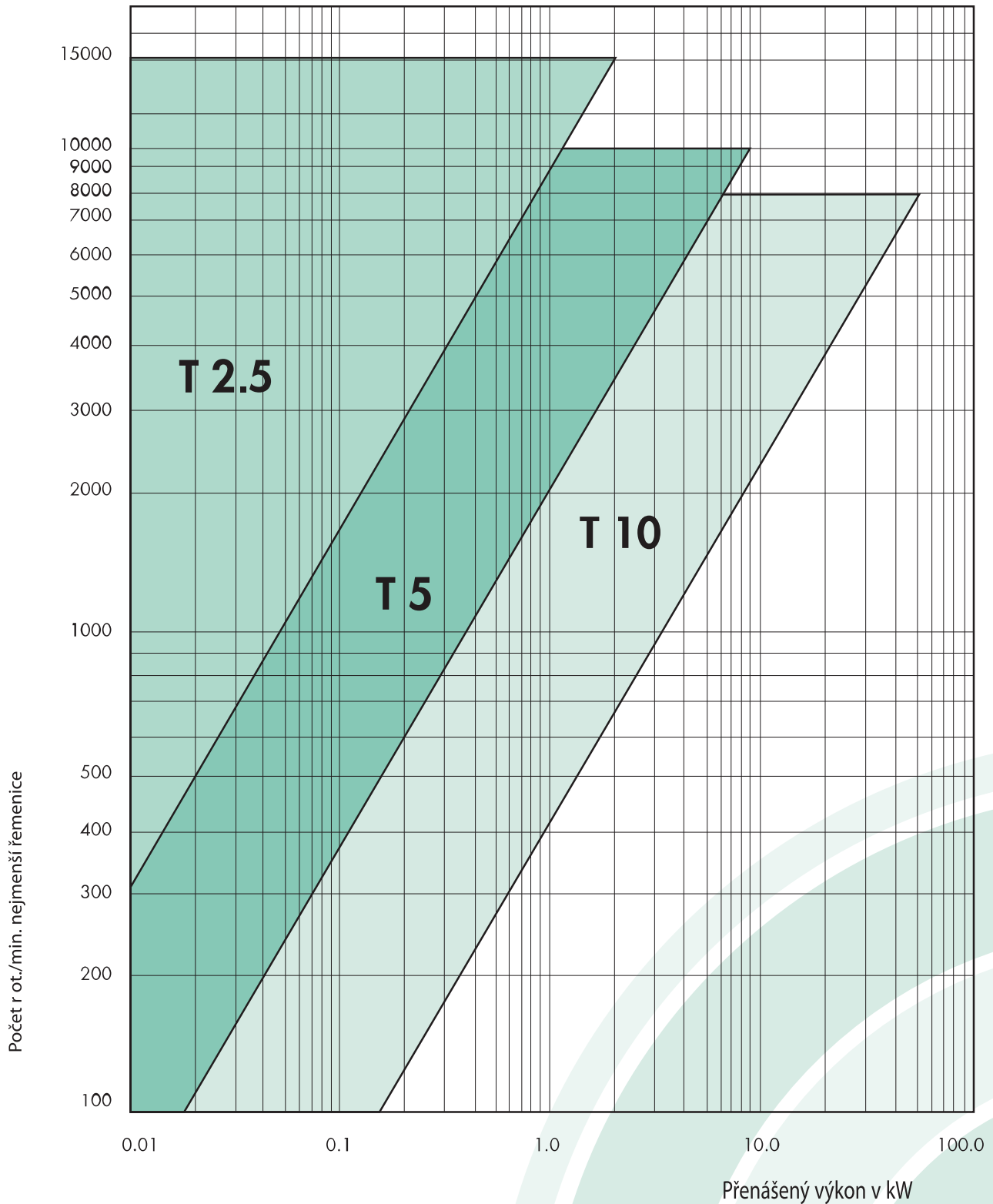
## T 5 (5mm rozteč)

| Typ řemenu | Počet zubů | Výpočtová délka |
|------------|------------|-----------------|
| T5-165     | 33         | 165.0           |
| T5-185     | 37         | 185.0           |
| T5-200     | 40         | 200.0           |
| T5-215     | 43         | 215.0           |
| T5-220     | 44         | 220.0           |
| T5-225     | 45         | 225.0           |
| T5-245     | 49         | 245.0           |
| T5-255     | 51         | 255.0           |
| T5-260     | 52         | 260.0           |
| T5-270     | 54         | 270.0           |
| T5-280     | 56         | 280.0           |
| T5-295     | 59         | 295.0           |
| T5-305     | 61         | 305.0           |
| T5-330     | 66         | 330.0           |
| T5-340     | 68         | 340.0           |
| T5-350     | 70         | 350.0           |
| T5-355     | 71         | 355.0           |
| T5-365     | 73         | 365.0           |
| T5-390     | 78         | 390.0           |
| T5-400     | 80         | 400.0           |
| T5-410     | 82         | 410.0           |
| T5-420     | 84         | 420.0           |
| T5-455     | 91         | 455.0           |
| T5-480     | 96         | 480.0           |
| T5-500     | 100        | 500.0           |
| T5-510     | 102        | 510.0           |
| T5-525     | 105        | 525.0           |
| T5-545     | 109        | 545.0           |
| T5-550     | 110        | 550.0           |
| T5-560     | 112        | 560.0           |
| T5-575     | 115        | 575.0           |
| T5-610     | 122        | 610.0           |
| T5-620     | 124        | 620.0           |
| T5-630     | 126        | 630.0           |
| T5-640     | 128        | 640.0           |
| T5-650     | 130        | 650.0           |
| T5-660     | 132        | 660.0           |
| T5-690     | 138        | 690.0           |
| T5-700     | 140        | 700.0           |
| T5-720     | 144        | 720.0           |
| T5-750     | 150        | 750.0           |
| T5-780     | 156        | 780.0           |
| T5-815     | 163        | 815.0           |
| T5-840     | 168        | 840.0           |
| T5-900     | 180        | 900.0           |
| T5-990     | 198        | 990.0           |
| T5-1075    | 215        | 1075.0          |
| T5-1100    | 220        | 1100.0          |
| T5-1215    | 243        | 1215.0          |
| T5-1315    | 263        | 1315.0          |
| T5-1380    | 276        | 1386.0          |

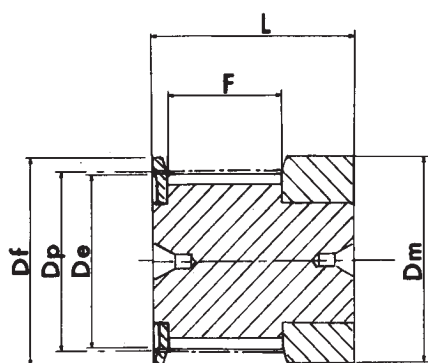
## T 10 (10mm rozteč)

| Typ řemenu | Počet zubů | Výpočtová délka |
|------------|------------|-----------------|
| T10-260    | 26         | 260             |
| T10-370    | 37         | 370             |
| T10-400    | 40         | 400             |
| T10-410    | 41         | 410             |
| T10-440    | 44         | 440             |
| T10-500    | 50         | 500             |
| T10-530    | 53         | 530             |
| T10-560    | 56         | 560             |
| T10-610    | 61         | 610             |
| T10-630    | 63         | 630             |
| T10-660    | 66         | 660             |
| T10-690    | 69         | 690             |
| T10-700    | 70         | 700             |
| T10-720    | 72         | 720             |
| T10-750    | 75         | 750             |
| T10-780    | 78         | 780             |
| T10-810    | 81         | 810             |
| T10-840    | 84         | 840             |
| T10-880    | 88         | 880             |
| T10-920    | 92         | 920             |
| T10-960    | 96         | 960             |
| T10-970    | 97         | 970             |
| T10-980    | 98         | 980             |
| T10-1010   | 101        | 1010            |
| T10-1080   | 108        | 1080            |
| T10-1140   | 114        | 1140            |
| T10-1150   | 115        | 1150            |
| T10-1210   | 121        | 1210            |
| T10-1240   | 124        | 1240            |
| T10-1250   | 125        | 1250            |
| T10-1300   | 130        | 1300            |
| T10-1320   | 132        | 1320            |
| T10-1350   | 135        | 1350            |
| T10-1390   | 139        | 1390            |
| T10-1400   | 140        | 1400            |
| T10-1420   | 142        | 1420            |
| T10-1450   | 145        | 1450            |
| T10-1460   | 146        | 1460            |
| T10-1500   | 150        | 1500            |
| T10-1560   | 156        | 1560            |
| T10-1610   | 161        | 1610            |
| T10-1750   | 175        | 1750            |
| T10-1780   | 178        | 1780            |
| T10-1880   | 188        | 1880            |
| T10-1960   | 196        | 1960            |
| T10-2250   | 225        | 2250            |

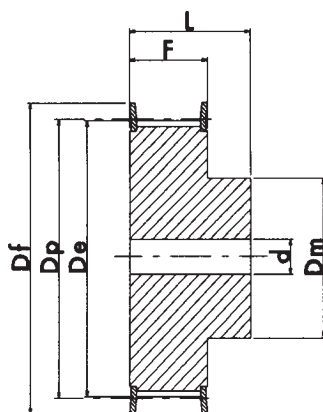
# VÝBĚR ROZTEČE PRO "T" ŘEMENY



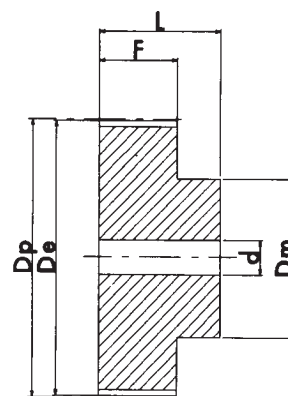
# O ZUBENÉ ŘEMENICE METRICKÉ " T "



Provedení 0F



Provedení 1F



Provedení 2

Jak identifikovat řemenici – příklad: 31 T10 25

Celková šířka řemenice L (mm) 31

Rozteč řemenice (mm) T10

Počet zubů řemenice 25

materiál: HLINÍK

Řemenice a tyče s roztečí T20 se vyrábí pouze na poptávku

T 2.5 (2.5 mm rozteč) URČENO PRO ŘEMENY ŠÍROKÉ 6 mm

HLINÍK

| POPIS      | PROV. | Počet ZUBŮ | Dp    | De    | Df   | Dm | F  | L  | d | PŘÍRUBA č. |
|------------|-------|------------|-------|-------|------|----|----|----|---|------------|
| 16 T2.5 12 | 0F    | 12         | 9.60  | 9.00  | 13.0 | 13 | 9  | 16 | - | 501        |
| 16 T2.5 14 | 0F    | 14         | 11.20 | 10.60 | 15.0 | 15 | 9  | 16 | - | 502        |
| 16 T2.5 15 | 0F    | 15         | 12.00 | 11.40 | 15.0 | 15 | 9  | 16 | - | 502        |
| 16 T2.5 16 | 0F    | 16         | 12.80 | 12.20 | 16.0 | 16 | 9  | 16 | - | 503        |
| 16 T2.5 16 | 1F    | 18         | 14.40 | 13.80 | 17.5 | 10 | 10 | 16 | - | 504        |
| 16 T2.5 19 | 1F    | 19         | 15.20 | 14.60 | 20.0 | 10 | 10 | 16 | - | 505        |
| 16 T2.5 20 | 1F    | 20         | 16.00 | 15.40 | 20.0 | 11 | 10 | 16 | - | 505        |
| 16 T2.5 22 | 1F    | 22         | 17.60 | 17.00 | 22.0 | 11 | 10 | 16 | - | 512        |
| 16 T2.5 24 | 1F    | 24         | 19.15 | 18.55 | 22.0 | 12 | 10 | 16 | 4 | 512        |
| 16 T2.5 25 | 1F    | 25         | 19.95 | 19.35 | 25.0 | 13 | 10 | 16 | 4 | 506        |
| 16 T2.5 26 | 1F    | 26         | 20.75 | 20.15 | 26.0 | 14 | 10 | 16 | 4 | 507        |
| 16 T2.5 28 | 1F    | 28         | 22.35 | 21.75 | 26.0 | 14 | 10 | 16 | 4 | 507        |
| 16 T2.5 30 | 1F    | 30         | 23.95 | 23.35 | 26.0 | 16 | 10 | 16 | 6 | 508        |
| 16 T2.5 32 | 1F    | 32         | 25.55 | 24.95 | 32.0 | 16 | 10 | 16 | 6 | 509        |
| 16 T2.5 36 | 1F    | 36         | 28.75 | 28.10 | 36.0 | 20 | 10 | 16 | 6 | 510        |
| 16 T2.5 40 | 1F    | 40         | 31.90 | 31.30 | 38.0 | 22 | 10 | 16 | 6 | 511        |
| 16 T2.5 44 | 2     | 44         | 35.10 | 34.50 | -    | 24 | 10 | 16 | 6 | -          |
| 16 T2.5 48 | 2     | 48         | 38.30 | 37.70 | -    | 26 | 10 | 16 | 6 | -          |
| 16 T2.5 60 | 2     | 60         | 47.85 | 47.25 | -    | 34 | 10 | 16 | 8 | -          |

# O ZUBENÉ ŘEMENICE METRICKÉ " T "

T 5 (5 mm rozteč) URČENO PRO ŘEMENY ŠÍROKÉ 10 mm

|        | POPIS    | PROV. | Počet ZUBŮ | Dp    | De    | Df   | Dm | F  | L  | d | PŘÍRUBA Č. |
|--------|----------|-------|------------|-------|-------|------|----|----|----|---|------------|
| HLINÍK | 21 T5 10 | 1F    | 10         | 15.92 | 15.05 | 19.5 | 8  | 15 | 21 | - | 3          |
|        | 21 T5 12 | 1F    | 12         | 19.10 | 18.25 | 23.0 | 11 | 15 | 21 | - | 1          |
|        | 21 T5 14 | 1F    | 14         | 22.29 | 21.45 | 25.0 | 13 | 15 | 21 | - | 2          |
|        | 21 T5 15 | 1F    | 15         | 23.88 | 23.05 | 28.0 | 16 | 15 | 21 | 6 | 4          |
|        | 21 T5 16 | 1F    | 16         | 25.47 | 24.60 | 32.0 | 18 | 15 | 21 | 6 | 5          |
|        | 21 T5 18 | 1F    | 18         | 28.65 | 27.80 | 32.0 | 20 | 15 | 21 | 6 | 6          |
|        | 21 T5 19 | 1F    | 19         | 30.25 | 29.40 | 36.0 | 22 | 15 | 21 | 6 | 8          |
|        | 21 T5 20 | 1F    | 20         | 31.83 | 31.00 | 36.0 | 23 | 15 | 21 | 6 | 8          |
|        | 21 T5 22 | 1F    | 22         | 35.02 | 34.15 | 38.0 | 24 | 15 | 21 | 6 | 9          |
|        | 21 T5 24 | 1F    | 24         | 38.21 | 37.40 | 42.0 | 26 | 15 | 21 | 6 | 13         |
|        | 21 T5 25 | 1F    | 25         | 39.80 | 38.95 | 44.0 | 26 | 15 | 21 | 6 | 12         |
|        | 21 T5 26 | 1F    | 26         | 41.39 | 40.60 | 44.0 | 26 | 15 | 21 | 6 | 12         |
|        | 21 T5 27 | 1F    | 27         | 42.98 | 42.20 | 48.0 | 30 | 15 | 21 | 8 | 11         |
|        | 21 T5 28 | 1F    | 28         | 44.58 | 43.75 | 48.0 | 32 | 15 | 21 | 8 | 11         |
|        | 21 T5 30 | 1F    | 30         | 47.76 | 46.95 | 51.0 | 34 | 15 | 21 | 8 | 16         |
|        | 21 T5 32 | 1F    | 32         | 50.94 | 50.10 | 54.0 | 38 | 15 | 21 | 8 | 18         |
|        | 21 T5 36 | 1F    | 36         | 57.31 | 56.45 | 64.0 | 38 | 15 | 21 | 8 | 23         |
|        | 21 T5 40 | 1F    | 40         | 63.66 | 62.85 | 66.5 | 40 | 15 | 21 | 8 | 24         |
|        | 21 T5 42 | 1F    | 42         | 66.86 | 66.00 | 70.0 | 40 | 15 | 21 | 8 | 26         |
|        | 21 T5 44 | 2     | 44         | 70.05 | 69.20 | -    | 45 | 15 | 21 | 8 | -          |
|        | 21 T5 48 | 2     | 48         | 76.42 | 75.55 | -    | 50 | 15 | 21 | 8 | -          |
|        | 21 T5 60 | 2     | 60         | 95.52 | 94.65 | -    | 65 | 15 | 21 | 8 | -          |

T 5 (5 mm rozteč) URČENO PRO ŘEMEN ŠÍROKÝ 16 mm

|        | POPIS    | PROV. | Počet ZUBŮ | Dp    | De    | Df   | Dm | F  | L  | d | PŘÍRUBA Č. |
|--------|----------|-------|------------|-------|-------|------|----|----|----|---|------------|
| HLINÍK | 27 T5 10 | 1F    | 10         | 15.92 | 15.05 | 19.5 | 8  | 21 | 27 | - | 3          |
|        | 27 T5 12 | 1F    | 12         | 19.10 | 18.25 | 23.0 | 11 | 21 | 27 | - | 1          |
|        | 27 T5 14 | 1F    | 14         | 22.29 | 21.45 | 25.0 | 13 | 21 | 27 | - | 2          |
|        | 27 T5 15 | 1F    | 15         | 23.88 | 23.05 | 28.0 | 16 | 21 | 27 | 6 | 4          |
|        | 27 T5 16 | 1F    | 16         | 25.47 | 24.60 | 32.0 | 18 | 21 | 27 | 6 | 5          |
|        | 27 T5 18 | 1F    | 18         | 28.65 | 27.80 | 32.0 | 20 | 21 | 27 | 6 | 6          |
|        | 27 T5 19 | 1F    | 19         | 30.25 | 29.40 | 36.0 | 22 | 21 | 27 | 6 | 8          |
|        | 27 T5 20 | 1F    | 20         | 31.83 | 31.00 | 36.0 | 23 | 21 | 27 | 6 | 8          |
|        | 27 T5 22 | 1F    | 22         | 35.02 | 34.15 | 38.0 | 24 | 21 | 27 | 6 | 9          |
|        | 27 T5 24 | 1F    | 24         | 38.21 | 37.40 | 42.0 | 26 | 21 | 27 | 6 | 13         |
|        | 27 T5 25 | 1F    | 25         | 39.80 | 38.95 | 44.0 | 26 | 21 | 27 | 6 | 12         |
|        | 27 T5 26 | 1F    | 26         | 41.39 | 40.60 | 44.0 | 26 | 21 | 27 | 6 | 12         |
|        | 27 T5 27 | 1F    | 27         | 42.98 | 42.20 | 48.0 | 30 | 21 | 27 | 8 | 11         |
|        | 27 T5 28 | 1F    | 28         | 44.58 | 43.75 | 48.0 | 32 | 21 | 27 | 8 | 11         |
|        | 27 T5 30 | 1F    | 30         | 47.76 | 46.95 | 51.0 | 34 | 21 | 27 | 8 | 16         |
|        | 27 T5 32 | 1F    | 32         | 50.94 | 50.10 | 54.0 | 38 | 21 | 27 | 8 | 18         |
|        | 27 T5 36 | 1F    | 36         | 57.31 | 56.45 | 64.0 | 38 | 21 | 27 | 8 | 23         |
|        | 27 T5 40 | 1F    | 40         | 63.66 | 62.85 | 66.5 | 40 | 21 | 27 | 8 | 24         |
|        | 27 T5 42 | 1F    | 42         | 66.86 | 66.00 | 70.0 | 40 | 21 | 27 | 8 | 26         |
|        | 27 T5 44 | 2     | 44         | 70.05 | 69.20 | -    | 45 | 21 | 27 | 8 | -          |
|        | 27 T5 48 | 2     | 48         | 76.42 | 75.55 | -    | 50 | 21 | 27 | 8 | -          |
|        | 27 T5 60 | 2     | 60         | 95.52 | 94.65 | -    | 65 | 21 | 27 | 8 | -          |

T 5 (5 mm rozteč) URČENO PRO ŘEMEN ŠÍROKÝ 25 mm

|        | POPIS    | PROV. | Počet ZUBŮ | Dp    | De    | Df   | Dm | F  | L  | d | PŘÍRUBA Č. |
|--------|----------|-------|------------|-------|-------|------|----|----|----|---|------------|
| HLINÍK | 36 T5 10 | 1F    | 10         | 15.92 | 15.05 | 19.5 | 8  | 30 | 36 | - | 3          |
|        | 36 T5 12 | 1F    | 12         | 19.10 | 18.25 | 23.0 | 11 | 30 | 36 | - | 1          |
|        | 36 T5 14 | 1F    | 14         | 22.29 | 21.45 | 25.0 | 13 | 30 | 36 | - | 2          |
|        | 36 T5 15 | 1F    | 15         | 23.88 | 23.05 | 28.0 | 16 | 30 | 36 | 6 | 4          |
|        | 36 T5 16 | 1F    | 16         | 25.47 | 24.60 | 32.0 | 18 | 30 | 36 | 6 | 5          |
|        | 36 T5 18 | 1F    | 18         | 28.65 | 27.80 | 32.0 | 20 | 30 | 36 | 6 | 6          |
|        | 36 T5 19 | 1F    | 19         | 30.25 | 29.40 | 36.0 | 22 | 30 | 36 | 6 | 8          |
|        | 36 T5 20 | 1F    | 20         | 31.83 | 31.00 | 36.0 | 23 | 30 | 36 | 6 | 8          |
|        | 36 T5 22 | 1F    | 22         | 35.02 | 34.15 | 38.0 | 24 | 30 | 36 | 6 | 9          |
|        | 36 T5 24 | 1F    | 24         | 38.21 | 37.40 | 42.0 | 26 | 30 | 36 | 8 | 13         |
|        | 36 T5 25 | 1F    | 25         | 39.80 | 38.95 | 44.0 | 26 | 30 | 36 | 8 | 12         |
|        | 36 T5 26 | 1F    | 26         | 41.39 | 40.60 | 44.0 | 26 | 30 | 36 | 8 | 12         |
|        | 36 T5 27 | 1F    | 27         | 42.98 | 42.20 | 48.0 | 30 | 30 | 36 | 8 | 11         |
|        | 36 T5 28 | 1F    | 28         | 44.58 | 43.75 | 48.0 | 32 | 30 | 36 | 8 | 11         |
|        | 36 T5 30 | 1F    | 30         | 47.76 | 46.95 | 51.0 | 34 | 30 | 36 | 8 | 16         |
|        | 36 T5 32 | 1F    | 32         | 50.94 | 50.10 | 54.0 | 38 | 30 | 36 | 8 | 18         |
|        | 36 T5 36 | 1F    | 36         | 57.31 | 56.45 | 64.0 | 38 | 30 | 36 | 8 | 23         |
|        | 36 T5 40 | 1F    | 40         | 63.66 | 62.85 | 66.5 | 40 | 30 | 36 | 8 | 24         |
|        | 36 T5 42 | 1F    | 42         | 66.86 | 66.00 | 70.0 | 40 | 30 | 36 | 8 | 26         |
|        | 36 T5 44 | 2     | 44         | 70.05 | 69.20 | -    | 45 | 30 | 36 | 8 | -          |
|        | 36 T5 48 | 2     | 48         | 76.42 | 75.55 | -    | 50 | 30 | 36 | 8 | -          |
|        | 36 T5 60 | 2     | 60         | 95.52 | 94.65 | -    | 65 | 30 | 36 | 8 | -          |

Řemenice a tyče s roztečí T20 jsou vyráběny pouze na poptávku.

# O ZUBENÉ ŘEMENICE METRICKÉ " T "

T 10 (10 mm rozteč) URČENO PRO ŘEMENY ŠÍROKÉ 16 mm

| HLINÍK | POPIS     | PROV.     | Počet ZUBŮ | Dp     | De     | Df    | Dm  | F  | L  | d  | PŘÍRUBA č. |
|--------|-----------|-----------|------------|--------|--------|-------|-----|----|----|----|------------|
|        |           | 31 T10 12 | 1F         | 12     | 38.20  | 36.35 | 42  | 28 | 21 | 31 | 6          |
|        | 31 T10 14 | 1F        | 14         | 44.56  | 42.70  | 48    | 32  | 21 | 31 | 8  | 11         |
|        | 31 T10 15 | 1F        | 15         | 47.75  | 45.90  | 51    | 32  | 21 | 31 | 8  | 16         |
|        | 31 T10 16 | 1F        | 16         | 50.93  | 49.10  | 54    | 35  | 21 | 31 | 8  | 18         |
|        | 31 T10 18 | 1F        | 18         | 57.29  | 55.45  | 60    | 40  | 21 | 31 | 8  | 21         |
|        | 31 T10 19 | 1F        | 19         | 60.48  | 58.65  | 66    | 44  | 21 | 31 | 8  | 24         |
|        | 31 T10 20 | 1F        | 20         | 63.66  | 61.80  | 66    | 46  | 21 | 31 | 8  | 24         |
|        | 31 T10 22 | 1F        | 22         | 70.03  | 68.20  | 75    | 52  | 21 | 31 | 8  | 27         |
|        | 31 T10 24 | 1F        | 24         | 76.39  | 74.55  | 83    | 58  | 21 | 31 | 8  | 29         |
|        | 31 T10 25 | 1F        | 25         | 79.58  | 77.75  | 83    | 60  | 21 | 31 | 8  | 29         |
|        | 31 T10 26 | 1F        | 26         | 82.76  | 80.90  | 87    | 60  | 21 | 31 | 8  | 31         |
|        | 31 T10 27 | 1F        | 27         | 85.95  | 84.10  | 91    | 60  | 21 | 31 | 8  | 32         |
|        | 31 T10 28 | 1F        | 28         | 89.12  | 87.25  | 93    | 60  | 21 | 31 | 8  | 33         |
|        | 31 T10 30 | 1F        | 30         | 95.49  | 93.65  | 102   | 60  | 21 | 31 | 8  | 35         |
|        | 31 T10 32 | 1F        | 32         | 101.86 | 100.00 | 106   | 65  | 21 | 31 | 10 | 38         |
|        | 31 T10 36 | 1F        | 36         | 114.59 | 112.75 | 119   | 70  | 21 | 31 | 10 | 43         |
|        | 31 T10 40 | 1F        | 40         | 127.32 | 125.45 | 131   | 80  | 21 | 31 | 10 | 47         |
|        | 31 T10 44 | 2         | 44         | 140.05 | 138.20 | -     | 88  | 21 | 31 | 10 | -          |
|        | 31 T10 48 | 2         | 48         | 152.78 | 150.95 | -     | 95  | 21 | 31 | 16 | -          |
|        | 31 T10 60 | 2         | 60         | 190.98 | 189.10 | -     | 110 | 21 | 31 | 16 | -          |

T 10 (10 mm rozteč) URČENO PRO ŘEMENY ŠÍROKÉ 25 mm

| HLINÍK | POPIS     | PROV.     | Počet ZUBŮ | Dp     | De     | Df    | Dm  | F  | L  | d  | PŘÍRUBA č. |
|--------|-----------|-----------|------------|--------|--------|-------|-----|----|----|----|------------|
|        |           | 40 T10 12 | 1F         | 12     | 38.20  | 36.35 | 42  | 28 | 30 | 40 | 6          |
|        | 40 T10 14 | 1F        | 14         | 44.56  | 42.70  | 48    | 32  | 30 | 40 | 8  | 11         |
|        | 40 T10 15 | 1F        | 15         | 47.75  | 45.90  | 51    | 32  | 30 | 40 | 8  | 16         |
|        | 40 T10 16 | 1F        | 16         | 50.93  | 49.10  | 54    | 35  | 30 | 40 | 8  | 18         |
|        | 40 T10 18 | 1F        | 18         | 57.29  | 55.45  | 60    | 40  | 30 | 40 | 8  | 21         |
|        | 40 T10 19 | 1F        | 19         | 60.48  | 58.65  | 66    | 44  | 30 | 40 | 8  | 24         |
|        | 40 T10 20 | 1F        | 20         | 63.66  | 61.80  | 66    | 46  | 30 | 40 | 8  | 24         |
|        | 40 T10 22 | 1F        | 22         | 70.03  | 68.20  | 75    | 52  | 30 | 40 | 8  | 27         |
|        | 40 T10 24 | 1F        | 24         | 76.39  | 74.55  | 83    | 58  | 30 | 40 | 8  | 29         |
|        | 40 T10 25 | 1F        | 25         | 79.58  | 77.75  | 83    | 60  | 30 | 40 | 8  | 29         |
|        | 40 T10 26 | 1F        | 26         | 82.76  | 80.90  | 87    | 60  | 30 | 40 | 8  | 31         |
|        | 40 T10 27 | 1F        | 27         | 85.95  | 84.10  | 91    | 60  | 30 | 40 | 8  | 32         |
|        | 40 T10 28 | 1F        | 28         | 89.12  | 87.25  | 93    | 60  | 30 | 40 | 8  | 33         |
|        | 40 T10 30 | 1F        | 30         | 95.49  | 93.65  | 102   | 60  | 30 | 40 | 8  | 35         |
|        | 40 T10 32 | 1F        | 32         | 101.86 | 100.00 | 106   | 65  | 30 | 40 | 10 | 38         |
|        | 40 T10 36 | 1F        | 36         | 114.59 | 112.75 | 119   | 70  | 30 | 40 | 10 | 43         |
|        | 40 T10 40 | 1F        | 40         | 127.32 | 125.45 | 131   | 80  | 30 | 40 | 10 | 47         |
|        | 40 T10 44 | 2         | 44         | 140.05 | 138.20 | -     | 88  | 30 | 40 | 10 | -          |
|        | 40 T10 48 | 2         | 48         | 152.78 | 150.95 | -     | 95  | 30 | 40 | 16 | -          |
|        | 40 T10 60 | 2         | 60         | 190.98 | 189.15 | -     | 110 | 30 | 40 | 16 | -          |

Řemence a tyče s roztečí T20 jsou vyráběny pouze na poptávku

## T 10 (10 mm rozteč) URČENO PRO ŘEMENY ŠÍROKÉ 32 mm

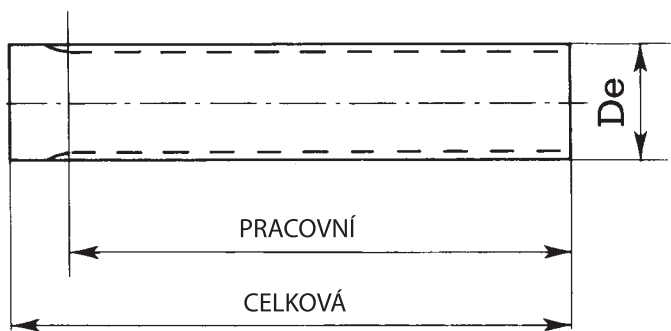
|        | POPIS     | PROV. | Počet ZUBŮ | Dp     | De     | Df  | Dm  | F  | L  | d  | PŘÍRUBA č. |
|--------|-----------|-------|------------|--------|--------|-----|-----|----|----|----|------------|
| HLINÍK | 47 T10 18 | 1F    | 18         | 57.29  | 55.45  | 60  | 40  | 37 | 47 | 10 | 21         |
|        | 47 T10 19 | 1F    | 19         | 60.48  | 58.60  | 66  | 44  | 37 | 47 | 10 | 24         |
|        | 47 T10 20 | 1F    | 20         | 63.66  | 61.80  | 66  | 46  | 37 | 47 | 12 | 24         |
|        | 47 T10 22 | 1F    | 22         | 70.03  | 68.20  | 75  | 52  | 37 | 47 | 12 | 27         |
|        | 47 T10 24 | 1F    | 24         | 76.39  | 74.55  | 83  | 58  | 37 | 47 | 12 | 29         |
|        | 47 T10 25 | 1F    | 25         | 79.58  | 77.75  | 83  | 60  | 37 | 47 | 12 | 29         |
|        | 47 T10 26 | 1F    | 26         | 82.76  | 80.90  | 87  | 60  | 37 | 47 | 12 | 31         |
|        | 47 T10 27 | 1F    | 27         | 85.95  | 84.10  | 91  | 60  | 37 | 47 | 12 | 32         |
|        | 47 T10 28 | 1F    | 28         | 89.12  | 87.25  | 93  | 60  | 37 | 47 | 12 | 33         |
|        | 47 T10 30 | 1F    | 30         | 95.49  | 93.65  | 102 | 60  | 37 | 47 | 12 | 35         |
|        | 47 T10 32 | 1F    | 32         | 101.86 | 100.00 | 106 | 65  | 37 | 47 | 12 | 38         |
|        | 47 T10 36 | 1F    | 36         | 114.59 | 112.75 | 119 | 70  | 37 | 47 | 16 | 43         |
|        | 47 T10 40 | 1F    | 40         | 127.32 | 125.45 | 131 | 80  | 37 | 47 | 16 | 47         |
|        | 47 T10 44 | 2     | 44         | 140.05 | 138.20 | -   | 88  | 37 | 47 | 16 | -          |
|        | 47 T10 48 | 2     | 48         | 152.78 | 150.95 | -   | 95  | 37 | 47 | 16 | -          |
|        | 47 T10 60 | 2     | 60         | 190.98 | 189.10 | -   | 110 | 37 | 47 | 16 | -          |

## T 10 (10 mm rozteč) URČENO PRO ŘEMENY ŠÍROKÉ 50 mm

|        | POPIS     | PROV. | Počet ZUBŮ | Dp     | De     | Df  | Dm  | F  | L  | d  | PŘÍRUBA č. |
|--------|-----------|-------|------------|--------|--------|-----|-----|----|----|----|------------|
| HLINÍK | 66 T10 18 | 1F    | 18         | 57.29  | 55.45  | 60  | 40  | 56 | 66 | 10 | 21         |
|        | 66 T10 19 | 1F    | 19         | 60.48  | 58.65  | 66  | 44  | 56 | 66 | 10 | 24         |
|        | 66 T10 20 | 1F    | 20         | 63.66  | 61.80  | 66  | 46  | 56 | 66 | 12 | 24         |
|        | 66 T10 22 | 1F    | 22         | 70.03  | 68.20  | 75  | 52  | 56 | 66 | 12 | 27         |
|        | 66 T10 24 | 1F    | 24         | 76.39  | 74.55  | 83  | 58  | 56 | 66 | 12 | 29         |
|        | 66 T10 25 | 1F    | 25         | 79.58  | 77.70  | 83  | 60  | 56 | 66 | 12 | 29         |
|        | 66 T10 26 | 1F    | 26         | 82.76  | 80.90  | 87  | 60  | 56 | 66 | 12 | 31         |
|        | 66 T10 27 | 1F    | 27         | 85.95  | 84.10  | 91  | 60  | 56 | 66 | 12 | 32         |
|        | 66 T10 28 | 1F    | 28         | 89.12  | 87.25  | 93  | 60  | 56 | 66 | 12 | 33         |
|        | 66 T10 30 | 1F    | 30         | 95.49  | 93.65  | 102 | 60  | 56 | 66 | 12 | 35         |
|        | 66 T10 32 | 1F    | 32         | 101.86 | 100.00 | 106 | 65  | 56 | 66 | 12 | 38         |
|        | 66 T10 36 | 1F    | 36         | 114.59 | 112.75 | 119 | 70  | 56 | 66 | 16 | 43         |
|        | 66 T10 40 | 1F    | 40         | 127.32 | 125.45 | 131 | 80  | 56 | 66 | 16 | 47         |
|        | 66 T10 44 | 2     | 44         | 140.05 | 138.20 | -   | 88  | 56 | 66 | 16 | -          |
|        | 66 T10 48 | 2     | 48         | 152.78 | 150.95 | -   | 95  | 56 | 66 | 16 | -          |
|        | 66 T10 60 | 2     | 60         | 190.98 | 189.10 | -   | 110 | 56 | 66 | 16 | -          |

Řemenice a tyče s roztečí T20 jsou vyráběny pouze na poptávku.

# O Z U B E N Ě T Y Č Ě M E T R I C K Ě " T "



POZN. Tyče s roztečí T 2.5 - T 5 - T 10 jsou vyráběny z hliníku vhodného pro anodickou oxidaci.

Řemenice a tyče s roztečí T20 jsou vyráběny pouze na poptávku.

T 2.5 (2.5 mm rozteč)

| POPIS    | Počet ZUBŮ | De VENKOVNÍ Ø | L PRACOVNÍ | L CELKOVÁ |
|----------|------------|---------------|------------|-----------|
| T2.5-10  | 10         | 7.45          | 50         | 75        |
| T2.5-12  | 12         | 9.00          | 50         | 75        |
| T2.5-13  | 13         | 9.80          | 50         | 75        |
| T2.5-14  | 14         | 10.60         | 50         | 75        |
| T2.5-15  | 15         | 11.40         | 50         | 75        |
| T2.5-16  | 16         | 12.20         | 50         | 75        |
| T2.5-17  | 17         | 13.00         | 50         | 75        |
| T2.5-18  | 18         | 13.80         | 50         | 75        |
| T2.5-19  | 19         | 14.60         | 90         | 120       |
| T2.5-20  | 20         | 15.40         | 90         | 120       |
| T2.5-21  | 21         | 16.20         | 90         | 120       |
| T2.5-22  | 22         | 17.00         | 125        | 140       |
| T2.5-24  | 24         | 18.55         | 125        | 140       |
| T2.5-26  | 26         | 20.15         | 125        | 140       |
| T2.5-27  | 27         | 20.95         | 125        | 140       |
| T2.5-28  | 28         | 21.75         | 125        | 140       |
| T2.5-29  | 29         | 22.55         | 125        | 140       |
| T2.5-30  | 30         | 23.35         | 125        | 140       |
| T2.5-32  | 32         | 24.95         | 125        | 140       |
| T2.5-34  | 34         | 26.55         | 125        | 140       |
| T2.5-35  | 35         | 27.35         | 132        | 140       |
| T2.5-36  | 36         | 28.10         | 132        | 140       |
| T2.5-38  | 38         | 29.70         | 140        | 140       |
| T2.5-40  | 40         | 31.30         | 140        | 140       |
| T2.5-42  | 42         | 32.90         | 140        | 140       |
| T2.5-44  | 44         | 34.50         | 140        | 140       |
| T2.5-45  | 45         | 35.30         | 140        | 140       |
| T2.5-48  | 48         | 37.70         | 140        | 140       |
| T2.5-50  | 50         | 39.29         | 160        | 160       |
| T2.5-60  | 60         | 47.25         | 160        | 160       |
| T2.5-65  | 65         | 51.20         | 160        | 160       |
| T2.5-70  | 70         | 55.20         | 160        | 160       |
| T2.5-72  | 72         | 56.80         | 160        | 160       |
| T2.5-90  | 90         | 71.12         | 160        | 160       |
| T2.5-100 | 100        | 79.08         | 160        | 160       |

T 5 (5 mm rozteč)

| POPIS  | Počet ZUBŮ | De VENKOVNÍ Ø | L PRACOVNÍ | L CELKOVÁ |
|--------|------------|---------------|------------|-----------|
| T5-10  | 10         | 15.05         | 125        | 140       |
| T5-11  | 11         | 16.65         | 125        | 140       |
| T5-12  | 12         | 18.25         | 125        | 140       |
| T5-13  | 13         | 19.85         | 125        | 140       |
| T5-14  | 14         | 21.45         | 140        | 140       |
| T5-15  | 15         | 23.05         | 140        | 140       |
| T5-16  | 16         | 24.60         | 140        | 140       |
| T5-17  | 17         | 26.20         | 140        | 140       |
| T5-18  | 18         | 27.00         | 140        | 140       |
| T5-19  | 19         | 29.40         | 140        | 140       |
| T5-20  | 20         | 31.00         | 160        | 160       |
| T5-21  | 21         | 32.70         | 160        | 160       |
| T5-22  | 22         | 34.15         | 160        | 160       |
| T5-23  | 23         | 35.85         | 160        | 160       |
| T5-24  | 24         | 37.40         | 160        | 160       |
| T5-25  | 25         | 38.95         | 160        | 160       |
| T5-26  | 26         | 40.60         | 160        | 160       |
| T5-27  | 27         | 42.20         | 160        | 160       |
| T5-28  | 28         | 43.75         | 160        | 160       |
| T5-29  | 29         | 45.35         | 160        | 160       |
| T5-30  | 30         | 46.95         | 160        | 160       |
| T5-32  | 32         | 50.10         | 160        | 160       |
| T5-34  | 34         | 53.25         | 160        | 160       |
| T5-35  | 35         | 54.85         | 160        | 160       |
| T5-36  | 36         | 56.45         | 160        | 160       |
| T5-37  | 37         | 58.06         | 160        | 160       |
| T5-38  | 38         | 59.65         | 160        | 160       |
| T5-40  | 40         | 62.85         | 160        | 160       |
| T5-42  | 42         | 66.00         | 160        | 160       |
| T5-44  | 44         | 69.20         | 160        | 160       |
| T5-45  | 45         | 70.80         | 160        | 160       |
| T5-46  | 46         | 72.40         | 160        | 160       |
| T5-48  | 48         | 75.55         | 160        | 160       |
| T5-50  | 50         | 78.75         | 160        | 160       |
| T5-60  | 60         | 94.65         | 160        | 160       |
| T5-72  | 72         | 113.75        | 160        | 160       |
| T5-80  | 80         | 126.48        | 160        | 160       |
| T5-90  | 90         | 142.40        | 160        | 160       |
| T5-100 | 100        | 158.31        | 160        | 160       |

T 10 (10 mm rozteč)

| POPIS  | Počet ZUBŮ | De VENKOVNÍ Ø | L PRACOVNÍ | L CELKOVÁ |
|--------|------------|---------------|------------|-----------|
| T10-10 | 10         | 29.98         | 140        | 140       |
| T10-11 | 11         | 33.16         | 140        | 140       |
| T10-12 | 12         | 36.35         | 140        | 140       |
| T10-13 | 13         | 39.55         | 140        | 140       |
| T10-14 | 14         | 42.70         | 160        | 160       |
| T10-15 | 15         | 45.90         | 160        | 160       |
| T10-16 | 16         | 49.10         | 160        | 160       |
| T10-17 | 17         | 52.25         | 160        | 160       |
| T10-18 | 18         | 55.45         | 160        | 160       |
| T10-19 | 19         | 58.65         | 160        | 160       |
| T10-20 | 20         | 61.80         | 160        | 160       |
| T10-21 | 21         | 65.00         | 160        | 160       |
| T10-22 | 22         | 68.15         | 160        | 160       |
| T10-23 | 23         | 71.35         | 160        | 160       |
| T10-24 | 24         | 74.55         | 160        | 160       |
| T10-26 | 26         | 80.90         | 160        | 160       |
| T10-28 | 28         | 87.25         | 160        | 160       |
| T10-30 | 30         | 93.65         | 160        | 160       |
| T10-32 | 32         | 100.00        | 160        | 160       |
| T10-34 | 34         | 106.40        | 160        | 160       |
| T10-36 | 36         | 112.75        | 160        | 160       |
| T10-38 | 38         | 119.10        | 160        | 160       |
| T10-40 | 40         | 125.45        | 160        | 160       |
| T10-45 | 45         | 141.40        | 160        | 160       |
| T10-48 | 48         | 150.95        | 160        | 160       |
| T10-60 | 60         | 189.15        | 160        | 160       |
| T10-72 | 72         | 227.29        | 160        | 160       |